

Certificate of Analysis

Compliance Test

Lemonade
Sample Matrix:
HEMP
Extract
Ingestion



Client Information: Liquid Headspace 539 W Commerce Street Unit 6998 Dallas, Texas 75208	Manufacturing Facility: NM Wineries 1325 De Baca Road SE Deming, NM 88030 Production Date: 2025-10-02	Batch Data: Batch # OG - Lemon 25mg Batch Date: 2025-10-02 Extracted From: Hemp	Order Details: Test Reg State: National	Food Permits: State: NM - #1009437
--	--	---	---	--

Order # LIQ251015-040001 Order Date: 2025-10-15 Sample # AAHD627	Sampling Date: 2025-10-24 Lab Batch Date: 2025-10-24 Completion Date: 2025-11-03	Volume: 355 ml	Net Weight per Serving: 355 ml Servings Per Package: 1
--	---	-----------------------	---

Product Image

Potency Passed	Staphylococcus Aureus Passed	HHCP Tested	Terpenes Passed	Pesticides Passed
Heavy Metals Passed	Mycotoxins Passed	Residual Solvents Passed	Pathogenic Microbiology Passed	Listeria Monocytogenes Passed
Microbiology Tested	Microbiology Petrifilm Passed	Filtration Passed		

Potency Summary

Total HHC	<LOQ	Delta 9 THC	0.00689%
per Serving	0.00 mg	per Serving	24.5 mg
per Package	0.00 mg	per Package	24.5 mg
Total Active CBD	0.000246%	Total CBG	<LOQ
per Serving	0.873 mg	per Serving	0.00 mg
per Package	0.873 mg	per Package	0.00 mg
Total CBN	<LOQ	Total Cannabinoids	0.00714%
per Serving	0.00 mg	per Serving	25.3 mg
per Package	0.00 mg	per Package	25.3 mg
Total Active THC (LA)	6.89%	Total Active THC	0.00689%
per Serving	24.5 mg	per Serving	24.5 mg
per Package	24.5 mg	per Package	24.5 mg

Terpenes Summary

Analyte	Result (mg/g)	(%)
Total Terpenes: 0.000%		

Detailed Terpenes Analysis is on the following page

* Summary Results determined from two distinct Potency Tests - National Panel Potency + Potency (GA) LCUV

Aixia Sun Lab Director/Principal Scientist
D.H.Sc., M.Sc., B.Sc., MT (AAB)



Definitions and Abbreviations used in this report: Definitions and Abbreviations used in this report: Total CBD = CBD + (CBD-A * 0.877), Total CBDV = CBDV + (CBDVA * 0.867), Total THC = (THCA-A * 0.877) + Delta 9 THC, Total THCV = THCV + (THCVA * 0.87), CBG Total = (CBGA * 0.878) + CBG, CBN Total = (CBNA * 0.876) + CBN, Total CBC = CBC + (CBCA * 0.877), Total Cannabinoids = Total percentage of cannabinoids within the sample. (mg/ml) = Milligrams per Milliliter, LOQ = Limit of Quantitation, LOD = Limit of Detection, Dilution = Dilution Factor(ppb) = Parts per Billion, (%) = Percent, (cfu/g) = Colony Forming Unit per Gram(cfu/g) = Colony Forming Unit per Gram, LOD = Limit of Detection, (µg/g) = Microgram per Gram(ppm) = Parts per Million, (ppm) = (µg/g), (aw) = Water Activity, (mg/Kg) = Milligram per Kilogram Pesticides indicators: 1=FL LOD/LOQ/AL; 2= CO LOD/LOQ/AL; 3 = CO LOD/ACS CO LOQ

This report shall not be reproduced, without written approval, from ACS Laboratory. The results of this report relate only to the material or product analyzed. Test results are confidential unless explicitly waived otherwise. ACS Laboratory is accredited to the ISO/IEC 17025:2017 Standard. The tests and/or calibrations marked with an "" are not ISO/IEC 17025:2017 accredited test results. This facility meets the human health and food safety sanitation requirements of the Kentucky Cabinet for Health and Family Services as documented by KYCHFS.*

Certificate of Analysis Compliance Test

Lemonade
Sample Matrix:
HEMP
Extract
Ingestion



Client Information:

Liquid Headspace
539 W Commerce Street
Unit 6998
Dallas, Texas 75208

Manufacturing Facility:

NM Wineries
1325 De Baca Road SE
Deming, NM 88030
Production Date: 2025-10-02

Batch Data:

Batch # OG - Lemon 25mg
Batch Date: 2025-10-02
Extracted From: Hemp

Order Details:

Test Reg State: National

Food Permits:

State: NM - #1009437

Order #

LIQ251015-040001
Order Date: 2025-10-15
Sample # AAHD627

Sampling Date: 2025-10-24

Lab Batch Date: 2025-10-24
Completion Date: 2025-11-03

Volume: 355 ml

Net Weight per Serving:

355 ml
Servings Per Package:
1

National Panel Potency + Potency (GA) LCUV

Passed

SOP13.030 (LCMS)

Specimen Weight: 20000.000 mg

Analyte	Dilution (1:n)	LOD (mg/g)	LOQ (%)	Result (µg/ml)	(%)	Per Serving (mg)	Per Package (mg)
Delta-9 THC	8.000	0.000013	0.015	68.9	0.00689	24.5	24.5
CBD	8.000	0.0000540	0.015	2.46	0.000250	0.873	0.873
CBC	8.000	0.0000276	0.075	<LOQ	<LOQ	0.00	0.00
CBCA	8.000	0.000107	0.002	<LOQ	<LOQ	0.00	0.00
CBDA	8.000	0.00001	0.015	<LOQ	<LOQ	0.00	0.00
CBDV	8.000	.0000614	0.002	<LOQ	<LOQ	0.00	0.00
CBDVA	8.000	0.000014	0.002	<LOQ	<LOQ	0.00	0.00
CBE	8.000	.0000483	0.002	<LOQ	<LOQ	0.00	0.00
CBG	8.000	0.000248	0.015	<LOQ	<LOQ	0.00	0.00
CBGA	8.000	0.000008	0.015	<LOQ	<LOQ	0.00	0.00
CBL	8.000	.0000919	0.002	<LOQ	<LOQ	0.00	0.00
CBN	8.000	0.000014	0.015	<LOQ	<LOQ	0.00	0.00
CBNA	8.000	0.000014	0.002	<LOQ	<LOQ	0.00	0.00
CBT	8.000	0.000325	0.004	<LOQ	<LOQ	0.00	0.00
Delta-8 THC	8.000	0.000026	0.015	<LOQ	<LOQ	0.00	0.00
Delta-8 THC-O Acetate	8.000	0.000027	0.002	<LOQ	<LOQ	0.00	0.00
Exo-THC	8.000	0.00023	0.015	<LOQ	<LOQ	0.00	0.00
THCA-A	8.000	0.000032	0.015	<LOQ	<LOQ	0.00	0.00
THCV	8.000	.0000276	0.002	<LOQ	<LOQ	0.00	0.00
Delta-10 THC	8.000	0.000003	0.015	<LOQ	<LOQ	0.00	0.00
Delta-9 THC-O Acetate	8.000	0.000077	0.03	<LOQ	<LOQ	0.00	0.00
Total Active THC	8.000			69.0	0.00689	24.5	24.5
Total Active CBD	8.000			2.00	0.000246	0.710	0.710

Aixia Sun
Aixia Sun Lab Director/Principal Scientist
D.H.Sc., M.Sc., B.Sc., MT (AAB)



Definitions are found on page 1

This report shall not be reproduced, without written approval, from ACS Laboratory. The results of this report relate only to the material or product analyzed. Test results are confidential unless explicitly waived otherwise. ACS Laboratory is accredited to the ISO/IEC 17025:2017 Standard. The tests and/or calibrations marked with an "*" are not ISO/IEC 17025:2017 accredited test results. This facility meets the human health and food safety sanitation requirements of the Kentucky Cabinet for Health and Family Services as documented by KYCHFS.





Certificate of Analysis Compliance Test

Client Information:

Liquid Headspace
539 W Commerce Street
Unit 6998
Dallas, Texas 75208

Manufacturing Facility:

NM Wineries
1325 De Baca Road SE
Deming, NM 88030
Production Date: 2025-10-02

Batch Data:

Batch # OG - Lemon 25mg
Batch Date: 2025-10-02
Extracted From: Hemp

Order Details:

Test Reg State: National

Food Permits:

State: NM - #1009437

Order #

LIQ251015-040001
Order Date: 2025-10-15
Sample # AAHD627

Sampling Date:

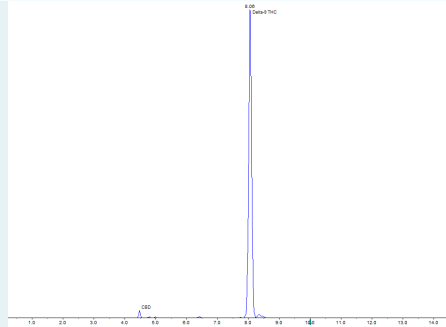
2025-10-24
Lab Batch Date: 2025-10-24
Completion Date: 2025-11-03

Volume: 355 ml

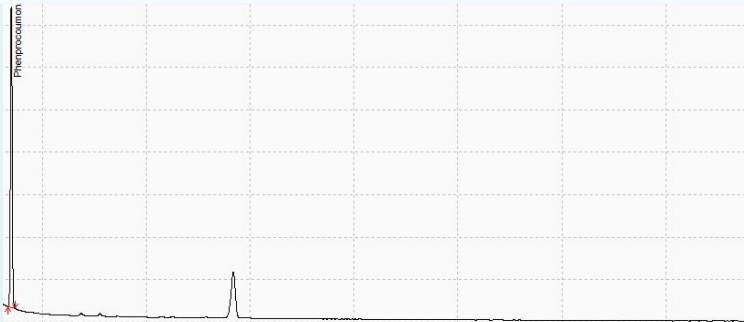
Net Weight per Serving:

355 ml
Servings Per Package:
1

Potency (GA) LCUV



National Panel Potency



Aixia Sun
Aixia Sun Lab Director/Principal Scientist
D.H.Sc., M.Sc., B.Sc., MT (AAB)



Definitions are found on page 1

This report shall not be reproduced, without written approval, from ACS Laboratory. The results of this report relate only to the material or product analyzed. Test results are confidential unless explicitly waived otherwise. ACS Laboratory is accredited to the ISO/IEC 17025:2017 Standard. The tests and/or calibrations marked with an "*" are not ISO/IEC 17025:2017 accredited test results. This facility meets the human health and food safety sanitation requirements of the Kentucky Cabinet for Health and Family Services as documented by KYCHFS.



Certificate of Analysis

Compliance Test

Lemonade
Sample Matrix:
HEMP
Extract
Ingestion



Client Information: Liquid Headspace 539 W Commerce Street Unit 6998 Dallas, Texas 75208	Manufacturing Facility: NM Wineries 1325 De Baca Road SE Deming, NM 88030 Production Date: 2025-10-02	Batch Data: Batch # OG - Lemon 25mg Batch Date: 2025-10-02 Extracted From: Hemp	Order Details: Test Reg State: National	Food Permits: State: NM - #T009437
--	--	---	---	--

Order # LIQ251015-040001 Order Date: 2025-10-15 Sample # AAHD627	Sampling Date: 2025-10-24 Lab Batch Date: 2025-10-24 Completion Date: 2025-11-03	Volume: 355 ml	Net Weight per Serving: 355 ml Servings Per Package: 1
--	--	----------------	---

NP Terpenes Specimen Weight: 451.000 mg				Passed			
Dilution Factor: 1.000				SOP13.045 (GC-MS/GC (Liquid Injection))			
Analyte	LOQ (%)	Result (mg/g)	(%)	Analyte	LOQ (%)	Result (mg/g)	(%)
(+)-Cedrol	0.002	<LOQ	<LOQ	Fenchyl Alcohol	0.002	<LOQ	<LOQ
(R)-(+)-Limonene	0.002	<LOQ	<LOQ	Gamma-Terpinene	0.002	<LOQ	<LOQ
3-Carene	0.002	<LOQ	<LOQ	Geraniol	0.002	<LOQ	<LOQ
alpha-Bisabolol	0.002	<LOQ	<LOQ	Geranyl acetate	0.002	<LOQ	<LOQ
alpha-Cedrene	0.002	<LOQ	<LOQ	Guaiol	0.002	<LOQ	<LOQ
alpha-Humulene	0.002	<LOQ	<LOQ	Hexahydrothymol	0.002	<LOQ	<LOQ
alpha-Phellandrene	0.002	<LOQ	<LOQ	Isoborneol	0.002	<LOQ	<LOQ
alpha-Pinene	0.002	<LOQ	<LOQ	Isopulegol	0.002	<LOQ	<LOQ
alpha-Terpinene	0.002	<LOQ	<LOQ	Linalool	0.002	<LOQ	<LOQ
beta-Myrcene	0.002	<LOQ	<LOQ	Nerol	0.002	<LOQ	<LOQ
beta-Pinene	0.002	<LOQ	<LOQ	Ocimene	0.00033	<LOQ	<LOQ
Borneol	0.002	<LOQ	<LOQ	Pulegone	0.002	<LOQ	<LOQ
Camphene	0.002	<LOQ	<LOQ	Sabinene	0.002	<LOQ	<LOQ
Camphors	0.006	<LOQ	<LOQ	Sabinene Hydrate	0.002	<LOQ	<LOQ
Caryophyllene oxide	0.002	<LOQ	<LOQ	Terpinolene	0.002	<LOQ	<LOQ
cis-Nerolidol	0.002	<LOQ	<LOQ	Total Terpeneol	0.00126	<LOQ	<LOQ
Eucalyptol	0.002	<LOQ	<LOQ	trans-Caryophyllene	0.002	<LOQ	<LOQ
Farnesene	0.002	<LOQ	<LOQ	trans-Nerolidol	0.002	<LOQ	<LOQ
Fenchone	0.002	<LOQ	<LOQ	Valencene	0.002	<LOQ	<LOQ

Staphylococcus Aureus Specimen Weight: 260.200 mg		Passed
Dilution Factor: 1.000		SOP13.029 (qPCR)
Analyte		Result
Staphylococcus aureus		Absence

National Panel Listeria Monocytogenes Specimen Weight: 974.900 mg		Passed
Dilution Factor: 1.000		SOP13.032 (qPCR)
Analyte		Result
Listeria Monocytogenes		Absence

Aixia Sun
Aixia Sun Lab Director/Principal Scientist
D.H.Sc., M.Sc., B.Sc., MT (AAB)



Definitions are found on page 1
This report shall not be reproduced, without written approval, from ACS Laboratory. The results of this report relate only to the material or product analyzed. Test results are confidential unless explicitly waived otherwise. ACS Laboratory is accredited to the ISO/IEC 17025:2017 Standard. The tests and/or calibrations marked with an "*" are not ISO/IEC 17025:2017 accredited test results. This facility meets the human health and food safety sanitation requirements of the Kentucky Cabinet for Health and Family Services as documented by KYCHFS.



Certificate of Analysis

Compliance Test

Lemonade
Sample Matrix:
HEMP
Extract
Ingestion



Client Information: Liquid Headspace 539 W Commerce Street Unit 6998 Dallas, Texas 75208	Manufacturing Facility: NM Wineries 1325 De Baca Road SE Deming, NM 88030 Production Date: 2025-10-02	Batch Data: Batch # OG - Lemon 25mg Batch Date: 2025-10-02 Extracted From: Hemp	Order Details: Test Reg State: National	Food Permits: State: NM - #1009437
--	--	---	---	--

Order # LIQ251015-040001 Order Date: 2025-10-15 Sample # AAHD627	Sampling Date: 2025-10-24 Lab Batch Date: 2025-10-24 Completion Date: 2025-11-03	Volume: 355 ml	Net Weight per Serving: 355 ml Servings Per Package: 1
--	--	----------------	---

National Panel Bile Tolerant Gram-Negative Bacteria		Passed	
Specimen Weight: 1008.700 mg		SOP13.003 (Petrifilm)	
Dilution Factor: 1.000			
Analyte	LOQ (cfu/g)	Action Level (cfu/g)	Result (cfu/g)
Bile tolerant gram-negative bacteria	100	100000	<100

National Panel Pathogenic Microbiology SAE (MicroArray)		Passed			
Specimen Weight: 1017.500 mg		SOP13.019 (Micro Array)			
Dilution Factor: 1.000					
Analyte	Action Level (cfu/g)	Result (cfu/g)	Analyte	Action Level (cfu/g)	Result (cfu/g)
Aspergillus (Flavus, Fumigatus, Niger, Terreus)	1	Absence in 1g	STEC E. Coli	1	Absence in 1g
Salmonella	1	Absence in 1g			

Microbiology AC TYM BTGN plating - (GA)		Tested					
Specimen Weight: 1008.700 mg		SOP13.003 (Petrifilm)					
Dilution Factor: 1.000							
Analyte	LOQ (cfu/g)	Action Level (cfu/g)	Result (cfu/g)	Analyte	LOQ (cfu/g)	Action Level (cfu/g)	Result (cfu/g)
Bile tolerant gram-negative bacteria	100	1000	<100	Total Yeast/Mold	1000	10000	<1000
Total Aerobic Count	1000	100000	<1000				

Filth and Foreign Material		Passed			
Specimen Weight: N/A Dilution Factor: 1.000		SOP13.020 (Electronic Balance)			
Analyte	Action Level (%)	Result (%)	Analyte	Action Level (%)	Result (%)
Covered Area	10	0.00	Weight %	1	0.00
Feces	0.5	0.00			

Aixia Sun Lab Director/Principal Scientist
D.H.Sc., M.Sc., B.Sc., MT (AAB)



Definitions are found on page 1
This report shall not be reproduced, without written approval, from ACS Laboratory. The results of this report relate only to the material or product analyzed. Test results are confidential unless explicitly waived otherwise. ACS Laboratory is accredited to the ISO/IEC 17025:2017 Standard. The tests and/or calibrations marked with an "*" are not ISO/IEC 17025:2017 accredited test results. This facility meets the human health and food safety sanitation requirements of the Kentucky Cabinet for Health and Family Services as documented by KYCHFS.

Certificate of Analysis

Compliance Test

Lemonade
Sample Matrix:
HEMP
Extract
Ingestion



Client Information: Liquid Headspace 539 W Commerce Street Unit 6998 Dallas, Texas 75208	Manufacturing Facility: NM Wineries 1325 De Baca Road SE Deming, NM 88030 Production Date: 2025-10-02	Batch Data: Batch # OG - Lemon 25mg Batch Date: 2025-10-02 Extracted From: Hemp	Order Details: Test Reg State: National	Food Permits: State: NM - #1009437
---	--	---	---	--

Order # LIQ251015-040001 Order Date: 2025-10-15 Sample # AAHD627	Sampling Date: 2025-10-24 Lab Batch Date: 2025-10-24 Completion Date: 2025-11-03	Volume: 355 ml	Net Weight per Serving: 355 ml Servings Per Package: 1
--	---	-----------------------	---

National Panel Mycotoxins **Passed**
SOP13.007 (LCMS/GCMS)

Specimen Weight: 587.340 mg
Dilution Factor: 2.550

Analyte	LOD (ppb)	LOQ (ppb)	Action Level (ppb)	Result (ppb)	Analyte	LOD (ppb)	LOQ (ppb)	Action Level (ppb)	Result (ppb)
Aflatoxin B1	0.093	2.5	5	<LOQ	Aflatoxin G2	0.627	2.5	5	<LOQ
Aflatoxin B2	0.121	2.5	5	<LOQ	Aflatoxin Total		2.5	20	<LOQ
Aflatoxin G1	0.191	2.5	5	<LOQ	Ochratoxin A	0.638	3.5	20	<LOQ

HHCP **Tested**
SOP13.050 (LCMS)

Specimen Weight: 20000.000 mg
Dilution Factor: 40.000

Analyte	LOD (%)	LOQ (%)	Result (µg/ml)	(%) Analyte	LOD (%)	LOQ (%)	Result (µg/ml)	(%)
(9R)-HHC	0.000	0.075	<LOQ	<LOQ 9(S)-HHCP	0.000	0.075	<LOQ	<LOQ
(9S)-HHC	0.000	0.075	<LOQ	<LOQ CBC	0.000	0.075	<LOQ	<LOQ
(±)-9B-hydroxy-HHC	0.000	0.075	<LOQ	<LOQ Delta-8 THC methyl ether	0.000	0.075	<LOQ	<LOQ
1(R)-H4-CBD	0.000	0.15	<LOQ	<LOQ Delta-9 THC methyl ether	0.000	0.075	<LOQ	<LOQ
1(S)-H4-CBD	0.000	0.15	<LOQ	<LOQ H2-CBD	0.000	0.075	<LOQ	<LOQ
9(R)-HHCP	0.000	0.075	<LOQ	<LOQ Total HHC		0.075	<LOQ	<LOQ

National Panel Heavy Metals **Passed**
SOP13.055 (ICP-MS)

Specimen Weight: 253.620 mg
Dilution Factor: 197.145

Analyte	LOD (ppb)	LOQ (ppb)	Action Level (ppb)	Result (ppb)	Analyte	LOD (ppb)	LOQ (ppb)	Action Level (ppb)	Result (ppb)
Antimony (Sb)	0.032	1000	2000	<LOQ	Molybdenum (Mo)	0.009	500	1000	<LOQ
Arsenic (As)	0.014	100	200	<LOQ	Nickel (Ni)	0.352	250	500	<LOQ
Barium (Ba)	0.056	15000	30000	<LOQ	Osmium (Os)	0.003	50	100	<LOQ
Cadmium (Cd)	0.002	100	200	<LOQ	Palladium (Pd)	0.017	50	100	<LOQ
Chromium (Cr)	0.052	150	300	<LOQ	Platinum (Pt)	0.008	50	100	<LOQ
Cobalt (Co)	0.003	150	300	<LOQ	Rhodium (Rh)	0.003	50	100	<LOQ
Copper (Cu)	0.059	1500	3000	<LOQ	Ruthenium (Ru)	0.002	50	100	<LOQ
Gold (Au)	0.021	50	100	<LOQ	Selenium (Se)	4.631	6500	13000	<LOQ
Iridium (Ir)	0.001	50	100	<LOQ	Silver (Ag)	0.005	350	700	<LOQ
Lead (Pb)	0.006	250	500	<LOQ	Thallium (Tl)	0.006	400	800	<LOQ
Lithium (Li)	0.301	1250	2500	<LOQ	Tin (Sn)	0.047	3000	6000	<LOQ
Mercury (Hg)	0.014	50	200	<LOQ	Vanadium (V)	0.038	50	100	<LOQ

Aixia Sun
Aixia Sun Lab Director/Principal Scientist
D.H.Sc., M.Sc., B.Sc., MT (AAB)

Definitions are found on page 1

This report shall not be reproduced, without written approval, from ACS Laboratory. The results of this report relate only to the material or product analyzed. Test results are confidential unless explicitly waived otherwise. ACS Laboratory is accredited to the ISO/IEC 17025:2017 Standard. The tests and/or calibrations marked with an "*" are not ISO/IEC 17025:2017 accredited test results. This facility meets the human health and food safety sanitation requirements of the Kentucky Cabinet for Health and Family Services as documented by KYCHFS.





Certificate of Analysis

Compliance Test

Client Information: Liquid Headspace 539 W Commerce Street Unit 6998 Dallas, Texas 75208	Manufacturing Facility: NM Wineries 1325 De Baca Road SE Deming, NM 88030 Production Date: 2025-10-02	Batch Data: Batch # OG - Lemon 25mg Batch Date: 2025-10-02 Extracted From: Hemp	Order Details: Test Reg State: National	Food Permits: State: NM - #T009437
--	--	---	---	--

Order # LIQ251015-040001 Order Date: 2025-10-15 Sample # AAHD627	Sampling Date: 2025-10-24 Lab Batch Date: 2025-10-24 Completion Date: 2025-11-03	Volume: 355 ml	Net Weight per Serving: 355 ml Servings Per Package: 1
--	--	----------------	---

National Panel Residual Solvents				Passed			
Specimen Weight: 53.390 mg				SOP13.056,SOP13.039 (GCMS- (HS),GCMS-HS)			
Dilution Factor: 1.000							
Analyte	LOQ (ppm)	Action Level (ppm)	Result (ppm)	Analyte	LOQ (ppm)	Action Level (ppm)	Result (ppm)
1,1-Dichloroethene	0.03	2	<LOQ	Ethylbenzene	0.025	2170	<LOQ
1,2-Dimethoxyethane	0.025	5	<LOQ	Ethylene glycol	0.025	50	<LOQ
1,2-Dichloroethane	0.025	2	<LOQ	Ethylene Oxide	0.025	1	<LOQ
1,4 Dioxane	0.025	50	<LOQ	Formic acid	4	1000	<LOQ
1-Butanol	0.025	5000	<LOQ	Heptane	0.025	500	<LOQ
1-Pentanol	0.025	5000	<LOQ	Hexane	0.025	10	<LOQ
1-Propanol	0.025	5000	<LOQ	Isobutyl acetate	4	1000	<LOQ
2-Butanone	0.025	5000	<LOQ	Isopropyl acetate	0.025	5000	<LOQ
2-Ethoxyethanol	0.025	50	<LOQ	Isopropyl alcohol	0.025	500	<LOQ
2-Methyl-1-propanol	4	1000	<LOQ	Methanol	0.025	250	<LOQ
2-methylbutane	0.025	5000	<LOQ	Methyl acetate	4	1000	<LOQ
3-methyl-1-butanol	4	1000	<LOQ	Methylene chloride	0.025	1	<LOQ
Acetic acid	4	1000	<LOQ	N,N-dimethylacetamide	0.025	50	<LOQ
Acetone	0.025	500	<LOQ	N,N-dimethylformamide	0.025	50	<LOQ
Acetonitrile	0.025	50	<LOQ	Pentane	0.025	500	<LOQ
Anisole	4	1000	<LOQ	Propane	0.025	500	<LOQ
Benzene	0.025	1	<LOQ	Propyl acetate	4	1000	<LOQ
Butanes	0.025	800	<LOQ	Pyridine	0.025	50	<LOQ
Butyl acetate	4	1000	<LOQ	tert-Butyl methyl ether	4	1000	<LOQ
Chlorobenzene	0.28	50	<LOQ	Tetrahydrofuran	0.025	50	<LOQ
Chloroform	0.025	1	<LOQ	Tetramethylene sulfone	0.025	160	<LOQ
Cumene	0.025	50	<LOQ	Toluene	0.025	1	<LOQ
Dimethyl sulfoxide	0.025	5000	<LOQ	Total Xylenes	0.025	3	<LOQ
Ethanol	0.025	2500	189	Trichloroethylene	0.025	1	<LOQ
Ethyl Acetate	0.025	400	<LOQ	Triethylamine	4	1000	<LOQ
Ethyl Ether	0.025	500	<LOQ	Xylenes(o)	0.025	1	<LOQ
Ethyl formate	4	1000	<LOQ	Xylenes(p/m)	0.025	1	<LOQ

Aixia Sun
Aixia Sun Lab Director/Principal Scientist
D.H.Sc., M.Sc., B.Sc., MT (AAB)



Definitions are found on page 1

This report shall not be reproduced, without written approval, from ACS Laboratory. The results of this report relate only to the material or product analyzed. Test results are confidential unless explicitly waived otherwise. ACS Laboratory is accredited to the ISO/IEC 17025:2017 Standard. The tests and/or calibrations marked with an "" are not ISO/IEC 17025:2017 accredited test results. This facility meets the human health and food safety sanitation requirements of the Kentucky Cabinet for Health and Family Services as documented by KYCHFS.*



Certificate of Analysis

Compliance Test

Lemonade
Sample Matrix:
HEMP
Extract
Ingestion



Client Information:

Liquid Headspace
539 W Commerce Street
Unit 6998
Dallas, Texas 75208

Manufacturing Facility:

NM Wineries
1325 De Baca Road SE
Deming, NM 88030
Production Date: 2025-10-02

Batch Data:

Batch # OG - Lemon 25mg
Batch Date: 2025-10-02
Extracted From: Hemp

Order Details:

Test Reg State: National

Food Permits:

State: NM - #1009437

Order #

LIQ251015-040001
Order Date: 2025-10-15
Sample # AAHD627

Sampling Date: 2025-10-24

Lab Batch Date: 2025-10-24
Completion Date: 2025-11-03

Volume: 355 ml

Net Weight per Serving:

355 ml
Servings Per Package:
1

National Panel Pesticides

Specimen Weight: 587.340 mg

Dilution Factor: 2.550

Passed
SOP13.007 (LCMS/GCMS)

Analyte	LOD (ppb)	LOQ (ppb)	Action Level (ppb)	Result (ppb)	Analyte	LOD (ppb)	LOQ (ppb)	Action Level (ppb)	Result (ppb)	Analyte	LOD (ppb)	LOQ (ppb)	Action Level (ppb)	Result (ppb)
Abamectin ¹	0.435	9	300	<LOQ	Hexythiazox ¹	0.045	9.6	2000	<LOQ	Cyantraniliprole ²	0.006004	9.6	10	<LOQ
Acephate ¹	0.467	9.6	3000	<LOQ	Imazalil ¹	0.639	9.6	100	<LOQ	Cyprodinil ²	0.001141	9.6	10	<LOQ
Acequinocyl ¹	0.801	9.6	2000	<LOQ	Imidacloprid ¹	0.159	9.6	3000	<LOQ	Dinotefuran ²	0.236975	9.6	50	<LOQ
Acetamiprid ¹	0.080	9.6	3000	<LOQ	Kresoxim Methyl ¹	0.268	9.6	1000	<LOQ	Endosulfan-alpha ²	12.22	30	2500	<LOQ
Aldicarb ¹	0.124	9.6	100	<LOQ	Malathion ¹	0.410	9.6	2000	<LOQ	Endosulfan-beta ²	22.76	30	2500	<LOQ
Azoxystrobin ¹	0.683	9.6	3000	<LOQ	Metalaxyl ¹	0.749	9.6	3000	<LOQ	Etridiazole ²	4.02	9.6	150	<LOQ
Bifenazate ¹	0.121	9.6	3000	<LOQ	Methiocarb ¹	0.099	9.6	100	<LOQ	Fensulfothion ²	0.000794	9.6	10	<LOQ
Bifenthrin ¹	0.082	9.6	500	<LOQ	Methomyl ¹	0.121	9.6	100	<LOQ	Fenthion ²	4.911315	9.6	10	<LOQ
Boscalid ¹	0.153	9.6	3000	<LOQ	methyl-Parathion ¹	3.065	9.6	100	<LOQ	Fluopyram ²	1.12E-9	9.6	10	<LOQ
Captan ¹	8.966	48	3000	<LOQ	Mevinphos ¹	1.370	9.6	100	<LOQ	Iprodione ²	0.105543	76.8	500	<LOQ
Carbaryl ¹	0.118	9.6	500	<LOQ	Myclobutanil ¹	0.571	9.6	3000	<LOQ	Kinoprene ²	3.4	441.6	1250	<LOQ
Carbofuran ¹	0.178	9.6	100	<LOQ	Naled ¹	0.083	9.6	500	<LOQ	Novaluron ²	0.000205	9.6	25	<LOQ
Chlorantraniliprole ¹	0.052	9.6	3000	<LOQ	Oxamyl ¹	0.123	9.6	500	<LOQ	Pirimicarb ²	0.0000566	9.6	10	<LOQ
Chlordane ¹	3.121	9.6	100	<LOQ	Pacllobutrazol ¹	0.123	9.6	100	<LOQ	Pyraclostrobin ²	5.31E-7	9.6	10	<LOQ
Chlorfenapyr ¹	0.139	9.6	100	<LOQ	Permethrin ¹	0.718	9.6	1000	<LOQ	Resmethrin ²	0.068013	9.6	50	<LOQ
Chloromequat Chloride ¹	0.783	9.6	3000	<LOQ	Phosmet ¹	0.301	9.6	200	<LOQ	Tebufenozide ²	0.018121	9.6	10	<LOQ
Chlorpyrifos ¹	0.271	9.6	100	<LOQ	Piperonylbutoxide ¹	0.217	9.6	3000	<LOQ	Teflubenzuron ²	0.01662	9.6	25	<LOQ
Clofentezine ¹	0.119	9.6	500	<LOQ	Prallethrin ¹	1.365	9.6	400	<LOQ	Tetrachlorvinphos ²	0.839125	9.6	10	<LOQ
Coumaphos ¹	0.129	9.6	100	<LOQ	Propiconazole ¹	0.259	9.6	1000	<LOQ	Atrazine ³	0.379918	9.6	9.6	<LOQ
Cyfluthrin ¹	7.730	48	1000	<LOQ	Propoxur ¹	0.147	9.6	100	<LOQ	Buprofezin ³	1.66E-9	9.6	9.6	<LOQ
Cypermethrin ¹	0.887	9.6	1000	<LOQ	Pyrethrins ¹	0.256	1.4	1000	<LOQ	Deltamethrin ³	0.492837	9.6	9.6	<LOQ
Daminozide ¹	1.797	9.6	100	<LOQ	Pyridaben ¹	0.059	9.6	3000	<LOQ	Diuron ³	0.006862	9.6	9.6	<LOQ
Diazinon ¹	1.328	9.6	200	<LOQ	Spinetoram ¹	0.346	9.6	3000	<LOQ	Dodemorph ³	6.47E-12	9.6	9.6	<LOQ
Dichlorvos ¹	0.465	9.6	100	<LOQ	Spinosad ¹	0.028	2.39	3000	<LOQ	Endosulfan sulfate ³	0.88376	9.6	2500	<LOQ
Dimethoate ¹	0.366	9.6	100	<LOQ	Spiromesifen ¹	0.291	9.6	3000	<LOQ	Fenvalerate ³	0.597752	9.6	9.6	<LOQ
Dimethomorph ¹	0.272	9.6	3000	<LOQ	Spirotetramat ¹	0.141	9.6	3000	<LOQ	Lambda Cyhalothrin ³	0.116859	9.6	9.6	<LOQ
Ethoprophos ¹	0.192	9.6	100	<LOQ	Spiroxamine ¹	0.119	9.6	100	<LOQ	Methoprene ³	1.148463	9.6	9.6	<LOQ
Etofenprox ¹	0.116	9.6	100	<LOQ	Tebuconazole ¹	0.000	9.6	1000	<LOQ	MGK-264 ³	0.002068	7.4	7.4	<LOQ
Etoxazole ¹	0.570	9.6	1500	<LOQ	Thiacloprid ¹	0.397	9.6	100	<LOQ	Pentachloronitrobenzen (Quintozene)	1.817	9.6	200	<LOQ
Fenhexamid ¹	1.011	9.6	3000	<LOQ	Thiamethoxam ¹	0.104	9.6	1000	<LOQ	Phenothrin ³	0.00000212	9.6	9.6	<LOQ
Fenoxycarb ¹	0.169	9.6	100	<LOQ	Trifloxystrobin ¹	0.088	9.6	3000	<LOQ	Pyriproxyfen ³	0.0000958	9.6	9.6	<LOQ
Fenpyroximate ¹	0.139	9.6	2000	<LOQ	Allethrin ²	0.472	9.6	100	<LOQ	Spirodiclofen ³	0.373769	9.6	9.6	<LOQ
Fipronil ¹	0.605	9.6	100	<LOQ	Azadirachtin ²	0.003	9.6	500	<LOQ	Tetramethrin ³	0.0000992	9.6	9.6	<LOQ
Fonicamid ¹	0.128	9.6	2000	<LOQ	Benzovindiflupyr ²	0.013	9.6	10	<LOQ	Thiabendazole ³	0.001251	9.6	9.6	<LOQ
			3000	<LOQ	Clothianidin ²	0.000	9.6	25	<LOQ	Thiophanate-methyl ³	0.000223	9.6	9.6	<LOQ

Aixia Sun
Aixia Sun Lab Director/Principal Scientist
D.H.Sc., M.Sc., B.Sc., MT (AAB)

Definitions are found on page 1

This report shall not be reproduced, without written approval, from ACS Laboratory. The results of this report relate only to the material or product analyzed. Test results are confidential unless explicitly waived otherwise. ACS Laboratory is accredited to the ISO/IEC 17025:2017 Standard. The tests and/or calibrations marked with an "*" are not ISO/IEC 17025:2017 accredited test results. This facility meets the human health and food safety sanitation requirements of the Kentucky Cabinet for Health and Family Services as documented by KYCHFS.

